

# COMMUNITY SAFETY FORUM

## Agenda Item 29

Brighton & Hove City  
Council

### Report to Community Safety Forum – 12<sup>th</sup> December 2011

#### Subject: Crime trends and performance in Brighton & Hove, Position up to October 2011

Contact Officer: Name: *Ruth Condon* Tel: 29-1103

E-mail: [ruth.condon@brighton-hove.gov.uk](mailto:ruth.condon@brighton-hove.gov.uk)

Wards Affected: All

#### 1. SUMMARY AND POLICY CONTEXT:

- 1.1 This report describes recent activities and progress relating to priority areas in the [Brighton & Hove Community Safety, Crime Reduction and Drugs Strategy 2011-14](#). It refers to some recent activities and also provides statistical updates relating to the first seven months of 2011/12, ie. April to October 2011 (or the most recent available).
- 1.2 Graphs showing monthly crime data going back to April 2007 are also provided. These enable recent data to be considered in the context of both longer term trends and also seasonal crime cycles (where applicable).

#### 2. RECOMMENDATIONS:

- (1) The Community Safety Forum notes the information provided in this report and is invited to:
  - i) Feedback on any developments from their community or organisation's experience which may help the understanding and interpretation of the data and trends contained in this report.
  - ii) Consider the potential for supporting crime reduction and community safety priorities within their own organisation or local community.

#### 3. INFORMATION:

##### Total Police-recorded Crime

- 3.1 Between April and October 2011 there were a total of 14,400 police recorded crimes, 1.1% fewer than in the same months of 2010/11 but falling short of the 3% reduction target.

##### Neighbourhoods and Quality of Life

- 3.2 In the first seven months of 2011/12, although seasonal increases are evident, there has been a good reduction in police recorded criminal damage (down 4.4%). However, fire service recorded non-accidental fires have increased (up by 8%) compared with the first seven months of 2010/11. Over the summer months numbers of non-accidental fires were fewer this year than last, and although numbers have fallen somewhat since then, the increase compared with last year is mainly a consequence of unusually low numbers over the winter months last year. The Fire and Rescue Service undertake education campaigns with schools and in particular areas, for instance the Safer Scoombe project earlier this year. Each primary school age child gets at least two education visits from during their primary years and this is now being extended to secondary school children. They work with the council to identify and remove abandoned vehicles and areas of excessive rubbish that might be set on fire.
- 3.3 The council has been working with residents and students in the community to ensure public safety concerns are considered at the planning stages of developments and inform improvements to public spaces. Street noise has been raised as an issue for residents and a project involving the Noise Abatement Society and Local Action Teams is underway to identify and map specific issues of concern to residents.
- 3.4 During 2010/11 police recorded cycle thefts increased by 13%, but the 2011/12 results up to October are showing a 6.5% decrease. This is mainly on account of relatively low numbers during the summer months of July and August in 2011. Work to prevent cycle theft includes the provision of additional cycle parking places, and ongoing delivery of messages to cyclists to encourage correct locking practices.

### **Drugs Misuse**

- 3.5 The Intelligent Commissioning Pilot on drug-related deaths has reinforced the profile of this important area of work. Work prioritised includes extending the roll out of training related to administering naloxone as an antidote to opiate (eg. heroin) overdoses in emergency situations; reducing inappropriate benzodiazepine prescribing; and improving intelligence sharing.
- 3.6 Having reduced waiting times and increased the number of people accessing treatment, local drug treatment services are now focusing on improving treatment effectiveness and the proportion of successful treatment outcomes. Latest data (Apr-Jun 2011) show that 49% of those exiting treatment are classed as having completed treatment successfully. This figure is an improvement on the result of 32% for 2010/11.
- 3.7 The Families Conference organised by the Community Against Drugs team highlighted the significant and often under-utilised role of families and carers in contributing to the recovery of a family member, as well as the support services that families require.
- 3.8 Many repeat offenders are people who misuse drugs, and a high percentage of the crimes they commit are acquisitive crimes. In the first seven months of 2011/12 all acquisitive crimes (incl. theft/handling, burglary and robbery) increased by 5.9%

compared with the same period in 2010/11. However, for serious acquisitive crimes (burglary, vehicle crime and robbery) there was a decrease of 6.9%. Substantial increases in 'lower level' thefts continue, especially in theft from person (up 40%) with shoplifting also continuing to show a rise (up 10%).

### **Alcohol Misuse and Alcohol-related Disorder**

- 3.9 Alcohol-related hospital admissions continue to show an upwards trend since the beginning of 2010.
- 3.10 The number of police recorded injury assaults has reduced by 20% in the first seven months of 2011/12 compared with the same months in 2010/11. This is a very good start against the 3% reduction target.
- 3.11 The city's alcohol misuse action plan includes a wide range of work related to the the four themes of: drinking 'culture'; availability of alcohol; the night time economy; and alcohol treatment. The Big Alcohol Debate was launched in October to engage the public on the issue of alcohol and to develop insights from different target groups. It will run until the end of December 2011 and a report on its findings to inform future policy will be produced by the end March 2012.
- 3.12 The density and diversity of licensed premises is managed by the Statement of Licensing Policy. This is being reviewed with a view to expanding the cumulative impact zone and introducing a matrix to ensure there is a consistent approach to licensing decisions. The White Night initiative, which was held at the end of October, provides an example of the availability of a range of different night time activities which can be enjoyed as an alternative to activities offered by the traditional licensed night time economy.
- 3.13 Licensed businesses are making positive steps towards ensuring they manage their premises to a consistently high standard via the Inn-Credible scheme. However, the cost differential of alcohol between premises with on- and off-licences remains significant and results in alcohol being highly affordable and being consumed under less controlled circumstances when purchased from premises with an off-licence. A joint letter has been written to the Treasury to lobby for differential rates of tax to be imposed on alcohol sold at on- and off-licensed premises.
- 3.14 The number of people receiving treatment for alcohol misuse continues to increase. A focus has been around improved training for staff at GP surgeries to identify and screen for alcohol misusers.

### **Anti-Social Behaviour**

- 3.15 From the telephone survey carried out by the police between June and September 2011 (inclusive), 15% out of the 507 city residents surveyed reported perceiving one or more of 6 types of anti-social behaviour as a problem in their local area. The highest levels of perceived ASB related to drunk and disorderly behaviour and litter in the police central district (city centre). For people in the east district, litter and vandalism were of most concern, while for the west district (Hove) drug or alcohol-related problems were the most important issue.

- 3.16 The ASB Street Outreach Team continue to work with the street community and have worked with 65 street drinkers and 5 beggars across 5 hotspot areas between July and September. Research has been undertaken to obtain feedback from victims and witnesses of anti-social behaviour into their views on the response by city services to their problems. Among other things it has found inconsistencies in the standard of services offered across the different city services when dealing with anti-social behaviour and points to aspects where improvements can be made. Within the Partnership Community Safety Team, the Anti-Social Behaviour and Hate Crime Teams have been integrated into a single Casework Team, providing support to the most vulnerable victims and witnesses.

### **Domestic Violence**

- 3.17 In the first 6 months of 2011/12 44% of domestic violence crimes were solved. This is below the result of 49% during 2010/11. 78% of DV court cases in the first half of 2011/12 resulted in a conviction. Although the position has slipped slightly since the position in the previous report, this remains at an improved level compared with the final position of 67% in 2010/11.
- 3.18 The intelligent commissioning process around domestic violence resulted in an action plan based on a detailed needs assessment. The strategic outcome has been agreed as "Brighton & Hove residents and communities to be free from domestic violence by increasing survivor safety, reducing the risk posed by perpetrators, decreasing social tolerance and increasing people's ability to have healthy relationships". The domestic violence action plan lays out many different areas of work and is owned by a range of partners who are responsible for taking it forward and embedding new approaches within their work.
- 3.19 Multi-Agency Risk Assessment Conferences which map out multi-agency responses to support high risk victims of domestic violence have recently increased in the frequency with which they meet (from monthly to fortnightly) in order to be able to respond to an increase in referrals.
- 3.20 Particular areas of work which need to be developed include developing work in schools around domestic and sexual violence, capacity building within the community to increase resilience among those at risk, developing work place policies and procedures and early intervention work through GPs and others.

### **Sexual Offences**

- 3.21 The number of police recorded serious sexual offences in the first seven months of 2011/12 was 162, a decrease of 5.3% from the same months in 2010/11. Although a reduction in sexual offences is our aim, we are at the same time looking to increase reporting of sexual crimes and incidents when they happen. In the first 6 months of 2011/12, 21% of serious sexual offences were detected by the police.
- 3.22 As well as increasing reporting, we also aim to increase the chances of the perpetrator being convicted. In the first half of 2011/12 73% of finalised court cases for (all) sexual offences resulted in a conviction. This is an increase on the position in 2010/11 and the Independent Sexual Violence Advisor service continues to support victims as they pursue their case through the criminal justice process.

3.23 A proportion of sexual offences come to the attention of the police and other services months and sometimes years after the event happened. However, there is a focus on encouraging and enabling victims to gain access to services at a much earlier stage since this would have various positive effects, including preventing further offences, bringing the perpetrator to justice and assisting the victim's recovery.

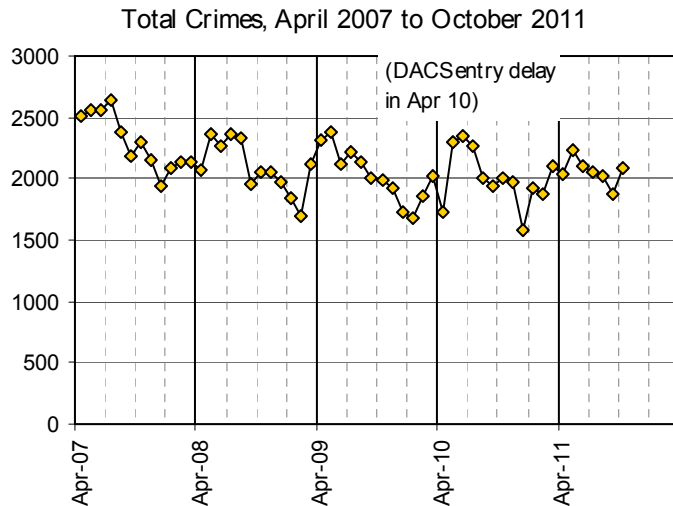
### **Hate Incidents and Crimes**

3.24 The number of police-recorded **racist and religiously motivated incidents and crimes** have continued to decline in the first half of 2011/12. The percentage of prosecutions resulting in a conviction continues its year on year rise and was 85% in the first half of 2011/12. The Racial Harassment Forum, a multi-sector partnership with a Community Chair and Vice Chair, continues to meet regularly and is a key good practice initiative to improve trust and confidence of the communities. The Forum monitors progress on the Strategy and scrutinises levels and trends of hate incidents in the city. Issues of right wing extremism, policing of demonstrations and the recording and reporting of hate incidents in the NHS have been the focus of work in the past six months.

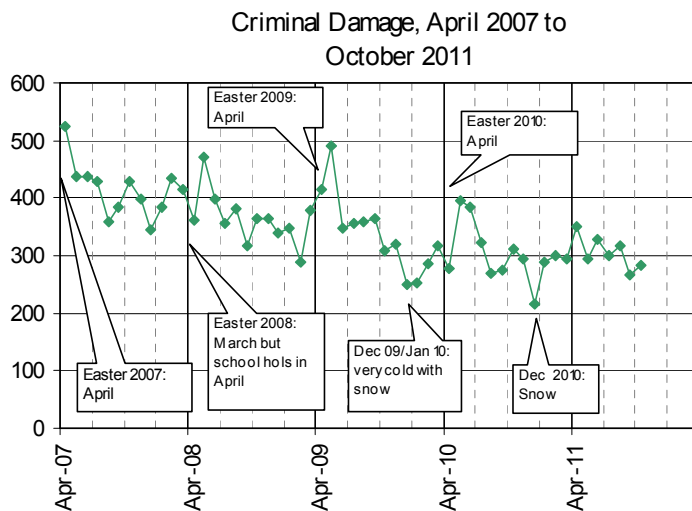
3.25 In the first six months of 2011/12 there have been 39 **LGBT hate incidents and crimes** recorded by the police, 17% fewer than in the same months in 2010/11. 16 crimes have been detected and 13 resulted in a charge being made. So far there have been 11 prosecutions finalised at court and all of these resulted in a conviction, which is a very good result. A review of the way LGBT and other forms of hate crimes are identified and monitored by the police is to be undertaken to see whether there are improvements that can be made. DV and LGBT DV service providers, partner organisations and supporters are ensuring the LGBT DV resources are distributed across frontline services and that training is provided to maximise the impact of these resources. There is an online resource being developed for reporting and cataloguing city-wide responses for transphobic harassment and assault.

3.26 There have been 11 **disability Hate Incident** Report Forms received in the first half of 2011/12. The police have just one disability hate crime and one crime related incident during the same period, with none being recorded in the most recent 3 months. Once at court the 4 cases which have been concluded in the first half of 2011/12 have all resulted in a conviction. However, the number of reports remains disappointing low, despite the publicity campaign and new resources and 16 reporting centres as reported previously. Work to encouraging reporting remains a priority and includes further training of staff at the reporting centres and outreach work. A caseworker with Interact (an advocacy group for people with learning disability) is available to support victims and witnesses of crimes with a learning disability.

### Crime trends up to August 2011



3.27 Total number of crimes between Apr and Aug numbered between about 2,000 and 2,250 each month, dropping below 2,000 during Sep<sup>1</sup>. Numbers rose again in Oct, reflecting a steep increase in theft offences during that month.



3.28 There is continued good progress with the downward trend in criminal damage. Numbers in Sept and Oct were below those experienced in these same months in the last few years.

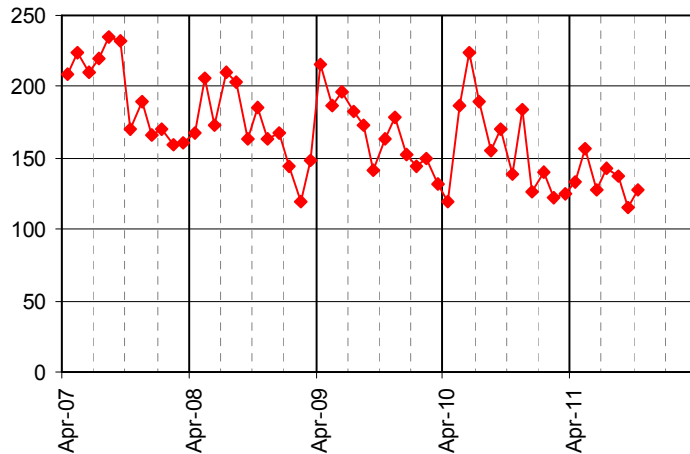
<sup>1</sup> There was a delay in entering crimes into the police data recording system in April 2010, so numbers are showing fewer in that month, and numbers in the following two months are consequently higher than they would otherwise have been. This effect is seen in a number of the crime types shown in this document.

# COMMUNITY SAFETY FORUM

## Agenda Item 29

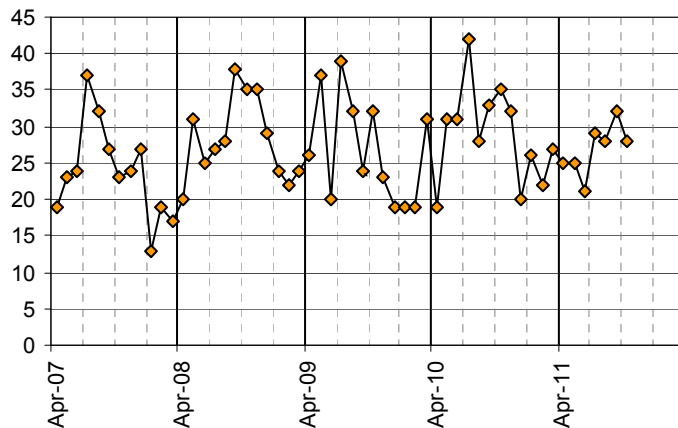
Brighton & Hove City Council

All Injury Violence  
April 2007 to October 2011



3.29 There was a clear reduction in injury violence offences this summer compared with last year and this has continued into the autumn months. This applies to both serious violence and less serious violence.

Sexual Offences  
April 2007 - October 2011



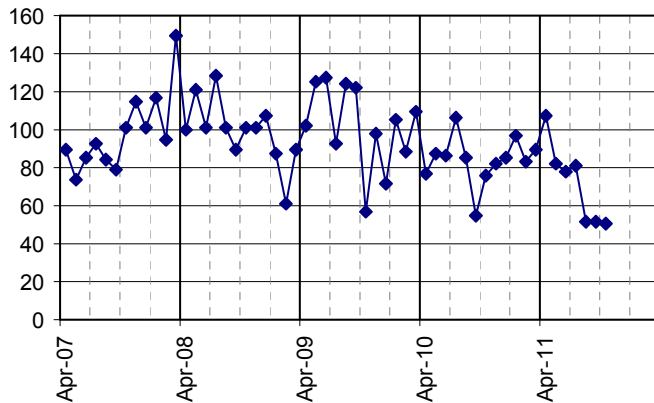
3.30 The summer did not experience the anticipated seasonal increase, but numbers in Sept and Oct are roughly on par with previous years. Sexual offences are likely to be highly underreported.

# COMMUNITY SAFETY FORUM

## Agenda Item 29

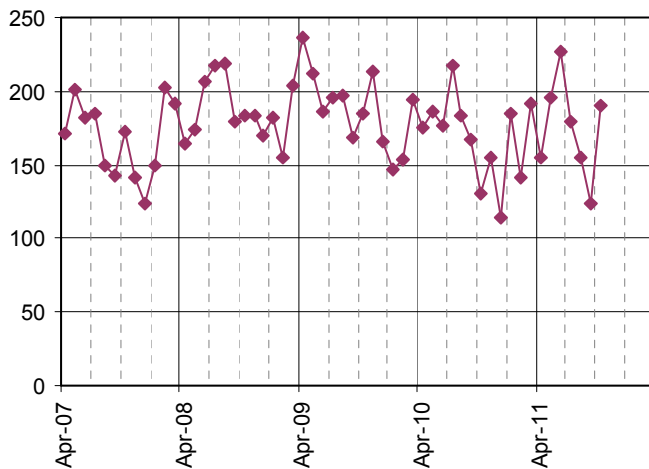
Brighton & Hove City Council

Domestic Burglary, April 2007 to October 2011



3.31 There has been a long term declining trend in domestic burglaries. Monthly numbers between Aug and Oct 2011 have been consistently below 55, lower than any point since April 2007.

Vehicle Crime, April 2007 to October 2011



3.32 Numbers of vehicle crimes have fluctuated over the past few months, mainly due to variations in the number of thefts from vehicles which outnumber thefts of vehicles by about 3 to 1.) The current trend in thefts from vehicles is upwards, while that of thefts of vehicles is downwards.

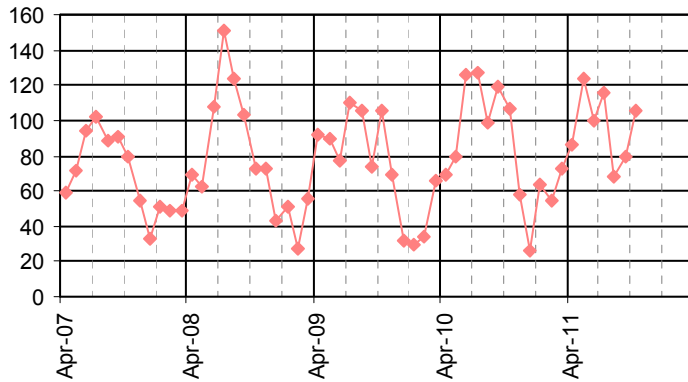


# COMMUNITY SAFETY FORUM

## Agenda Item 29

Brighton & Hove City Council

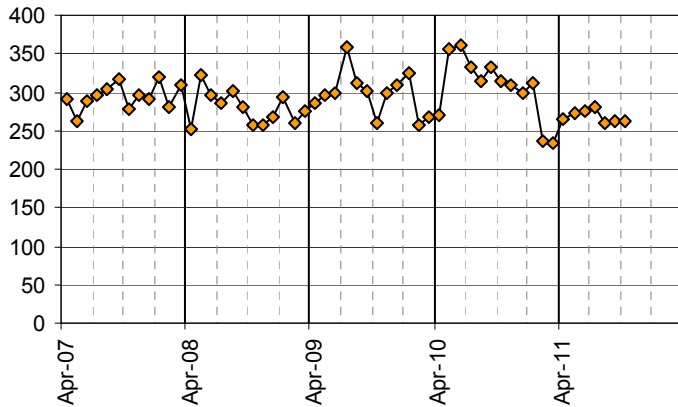
Theft of a Pedal Cycle,  
April 2007 to October 2011



3.33 Usually higher numbers of cycle thefts tend to occur in the summer months. However, the numbers in Aug and Sept were lower than might have been expected.

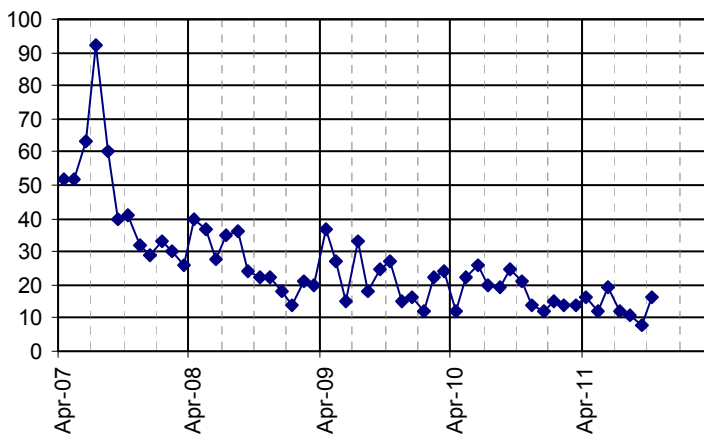
3.34 Police crime data presented in this report only reflect those crimes which are reported and recorded. There is likely to be a level of underreporting in many crime types. However, domestic violence and the hate crimes on this page are particularly liable to underreporting.

Domestic Violence Crimes and Incidents,  
April 2007 - October 2011



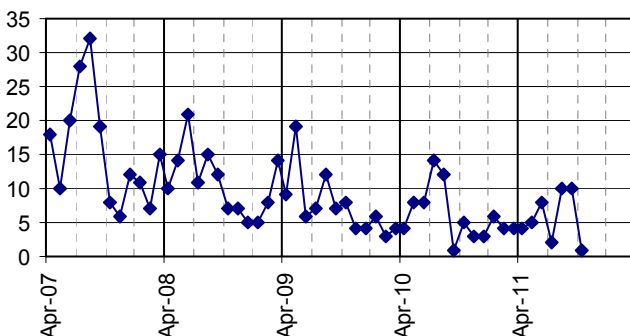
3.35 The number of domestic violence crimes and crime-related incidents recorded in the last nine months has been much lower than during most of 2010, and lower than in the same months the previous year.

Racist and Religiously Motivated Crimes and Incidents (police crime database),  
April 2007 to October 2011



3.36 The declining trend in racist and religiously motivated incidents and crimes appears to be continuing. There were only 8 recorded in Sept, which is first month the number has dropped below 10 for a number of years.

LGBT Hate Crimes and crime-related Incidents  
(police crime database),  
Apr 2007 to October 2011



3.37 The number of police-recorded LGBT hate crimes and crime-related incidents and has remained at ten or below for over a year. Aug and Sept saw the highest number (ten) over this period, but only 1 was recorded in Oct.

# COMMUNITY SAFETY FORUM

## Agenda Item 29

Brighton & Hove City Council

### Performance data for key crime types, 2011/12

Police recorded crimes	number of crimes Apr 10 – Oct 10	number of crimes Apr 11 – Oct 11	reduction target (from 2010/11 baseline)	performance against target to date		rank within 15 benchmarked CSPs <sup>2</sup>
Total Crimes	14580	14418	-3%		<b>not on target</b>	7
Criminal Damage	2237	2138	-5%		<b>not on target</b>	13
Injury Violence <sup>3</sup>	1183	943	-3%	<b>on target</b>		6 <sup>4</sup>
Sexual Offences	219	188	-	-		n/a <sup>5</sup>
Domestic Burglary	572	503	-	-		2
Theft from/of a Motor Vehicle	1237	1226	-	-		2
Pedal Cycle Theft	726	679	-	-		5
Domestic Violence Crimes and Incidents	2280	1879	-	-		n/a
Racist/Religiously motivated Crimes and Incidents	145	94	-	-		n/a
LGBT Hate Crimes and Incidents	52	40	-	-		n/a

<sup>2</sup> Brighton & Hove is matched for comparative purposes with 14 other Community Safety Partnerships (CSPs) according to a range of socio-demographic and geographic variables. A rank of 1 is the best; 15 is the worst; 8 is the middle position.

<sup>3</sup> As defined by Sussex Police

<sup>4</sup> iQuanta category 'wounding (serious and other)'

<sup>5</sup> Because sexual offences, DV and hate crimes are subject to underreporting and local work is being undertaken to increase reporting of these crimes, it is not appropriate to judge performance in comparison with other Community Safety Partnerships based on the number of police recorded crimes.

# COMMUNITY SAFETY FORUM

## Agenda Item 29

Brighton & Hove City Council

Disability Hate Crimes and Incidents	2 (to Sep)	2 (to Sep)	-	-	n/a